

# HB 100/300

## Horizontal Hard Bearing Balancing Machine

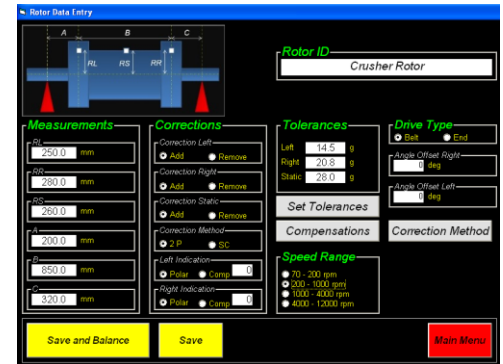
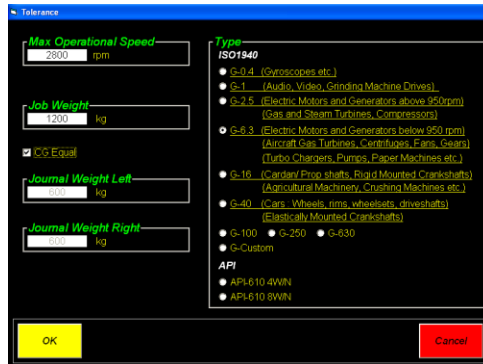
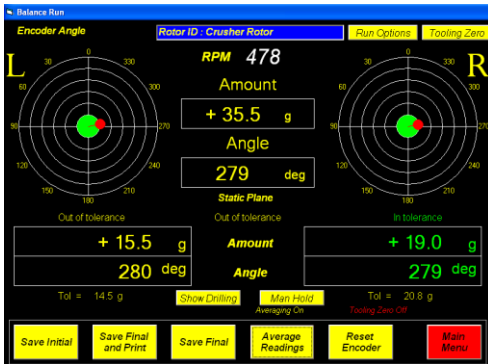


### Specifications

Max diameter over bed	600 mm (24 in)
Max diameter over belt drive	350 mm (14 in)
Bed Length	1200 / 2200 mm (47 / 87 in)
Max Weight	100 / 300 / kg (220 / 660 lbs)
Motor Power Belt Drive	0.75 / 1.1 kW ( 1 / 1.5 Hp)



Accurate & High Quality Electronics



### Advantages of Hard Bearing Machines over Soft Bearing Machines:

- No trial runs required, Unbalance measured with first run
- Safer with Start-up and Large initial unbalances due to rigid construction and no shaking
- Safer and easier to balance overhung rotors

Sealed Pick-up Sensors

Laser Speed Sensor

Position Encoder



Detailed Print Reports

Peterson Balancing Supply 510-344-3454		
Dynamic Balancing Report		
Date: 22/10/2015	Time: 3:34 PM	
Job Data		
Job No: 1128534	Operation Speed: 3000 rpm	Customer: Johnson Traction
Description: Rotor X34TT	Max: 6150 lbs	
Balancing Data		
a = 4.5 in	b = 18.0 in	c = 6.0 in
r <sub>L</sub> = 23.0 in	r <sub>R</sub> = 22.0 in	Balancing Speed = 475 rpm
Tolerance Data		
Type: API 610 BWIN	Upper Left Plane: 0.3750 oz	Upper Right Plane: 0.3920 oz
Results		
Left Plane	Static Plane	Right Plane
Initial Amount: +3.3 oz	Initial Amount: +4.8 oz	Initial Amount: +0.9065 oz
Final Amount: +0.9150 oz	Final Amount: +0.2171 oz	Final Amount: +0.2469 oz
Angle: 283 deg	Angle: 282 deg	Angle: 183 deg
Angle: 281 deg	Angle: 281 deg	Angle: 158 deg
Result: In tolerance		
Your job has been balanced on the most sophisticated COETZ Balancing Machine by our trained technicians.		
Technician	Supervisor	
Notes: Operator: James Anderson		