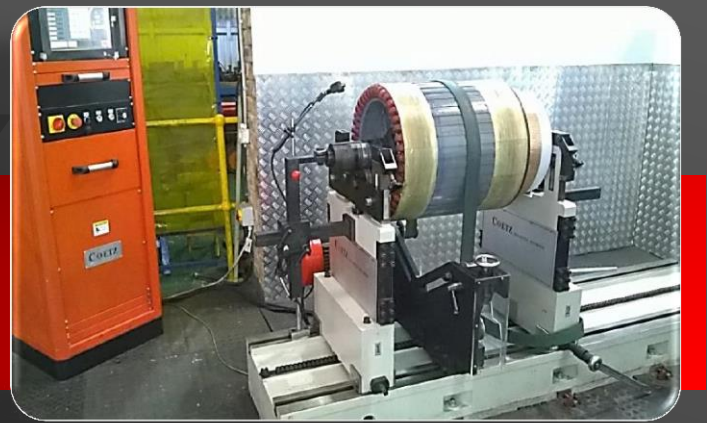


HB 2000/3000/4000

Standard Model

Horizontal Hard Bearing Balancing Machine

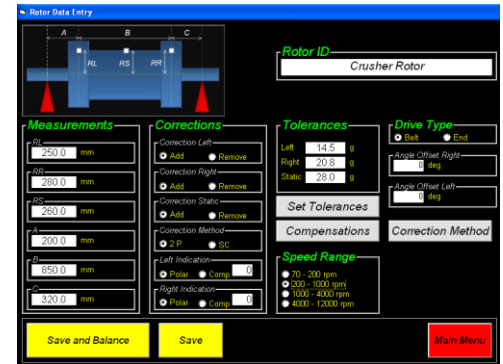
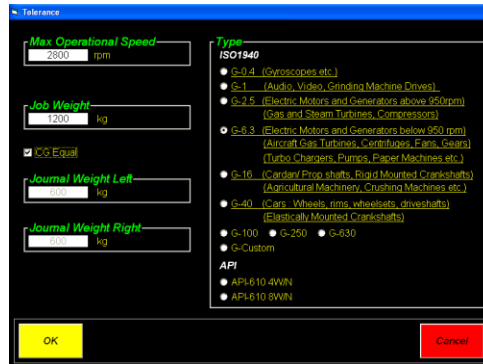
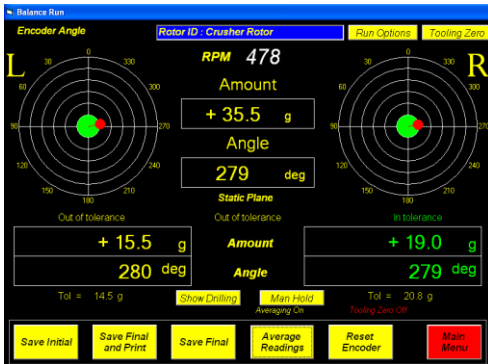


Accurate & High Quality Electronics



Specifications

Max diameter over bed	1800 mm (71 in)
Max diameter over belt drive	1250 mm (49 in)
Bed Length	1500 / 2600 / 3500 mm (59 / 102 / 138 in)
Max Weight	2000 / 3000 / 4000 kg (4400 / 6600 / 8800 lbs)
Motor Power Belt Drive	5.5 / 7.5 (7.4 / 9.4 Hp)
Motor Power End Drive	7.5 / 11 kW (9.4 / 15 Hp)



Advantages of Hard Bearing Machines over Soft Bearing Machines:

- No trial runs required, Unbalance measured with first run
- Safer with Start-up and Large initial unbalances due to rigid construction and no shaking
- Safer and easier to balance overhung rotors

Sealed Pick-up Sensors

Laser Speed Sensor

Position Encoder



Detailed Print Reports

Peterson Balancing Supply 510-344-3454		
Dynamic Balancing Report		
Date: 22/10/2015	Time: 3:34 PM	
Job Data		
Job No: 1128534	Operation Speed: 3000 rpm	Customer: Johnson Traction
Description: Rotor X34TT		Max: 6150 lbs
Balancing Data		
a = 4.5 in	b = 18.0 in	c = 6.0 in
rl = 23.0 in	rr = 22.0 in	Balancing Speed = 475 rpm
Tolerance Data		
Type: API 610 8WN	Upper Left Plane: 0.3750 oz	Upper Right Plane: 0.3920 oz
Results		
Left Plane	Static Plane	Right Plane
Initial Amount: +3.3 oz Final Amount: +3.9150 oz	Initial Amount: +4.8 oz Final Amount: +0.2171 oz	Initial Amount: +0.9065 oz Final Amount: +0.2469 oz
Angle: 283 deg Angle: 272 deg	Angle: 282 deg Angle: 281 deg	Angle: 183 deg Angle: 158 deg
Result: In tolerance		
Your job has been balanced on the most sophisticated COETZ Balancing Machine by our trained technicians		
Technician	Supervisor	
Notes: Operator: James Anderson		