

HB 500/750/1000

Horizontal Hard Bearing Balancing Machine

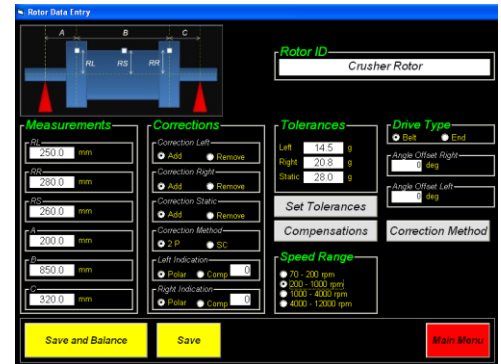
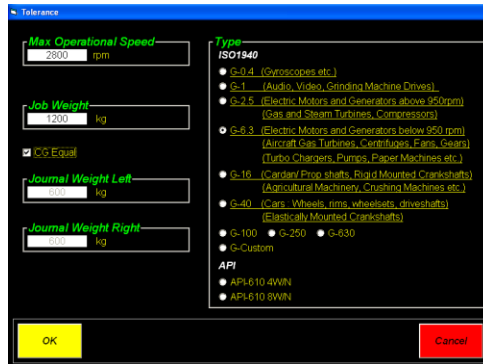
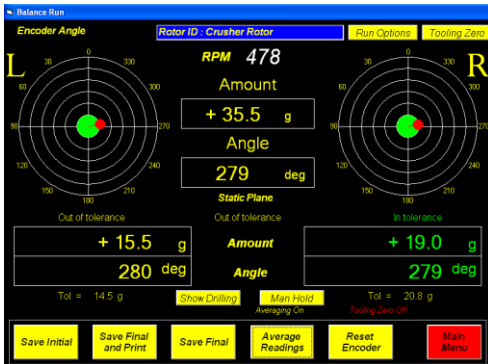


Specifications

Max diameter over bed	1600 mm (63 in)
Max diameter over belt drive	1200 mm (47 in)
Bed Length	1500 / 2600 / 4000 mm (59 / 102 / 157 in)
Max Weight	500 / 750 / 1000 kg (1100 / 1650 / 2200 lbs)
Motor Power Belt Drive	3 / 4 kW (4 / 5.4 Hp)
Motor Power End Drive	4 / 5.5 kW (5.4 / 7.4 Hp)



Accurate & High Quality Electronics



Advantages of Hard Bearing Machines over Soft Bearing Machines:

- No trial runs required, Unbalance measured with first run
- Safer with Start-up and Large initial unbalances due to rigid construction and no shaking
- Safer and easier to balance overhung rotors

Sealed Pick-up Sensors

Laser Speed Sensor

Position Encoder



Detailed Print Reports

Peterson Balancing Supply 510-344-3454					
Dynamic Balancing Report					
Date: 22/10/2015		Time: 3:34 PM			
Job Data					
Job No: 1128534	Operation Speed: 3000 rpm	Customer: Johnson Traction			
Description: Rotor X34TT		Max: 6150 lbs			
Balancing Data					
a = 4.5 in	b = 18.0 in	c = 6.0 in			
rL = 23.0 in	rR = 22.0 in	Balancing Speed = 475 rpm			
Tolerance Data					
Type: API 610 8WN	Upper Left Plane: 0.3750 oz	Upper Static Plane: 0.7680 oz	Upper Right Plane: 0.3920 oz		
Results					
Left Plane		Static Plane		Right Plane	
Initial Amount: +3.3 oz	Angle: 283 deg	Initial Amount: +4.8 oz	Angle: 282 deg	Initial Amount: +0.9065 oz	Angle: 188 deg
Final Amount: +0.2152 oz	Angle: 272 deg	Final Amount: +0.2071 oz	Angle: 281 deg	Final Amount: +0.2469 oz	Angle: 158 deg
Result: In tolerance		Result: In tolerance		Result: In tolerance	
Your job has been balanced on the most sophisticated COETZ Balancing Machine by our trained technicians					
Technician			Supervisor		
Notes: Operator: James Anderson					