

# HB 6000/8000

## Raised Machine

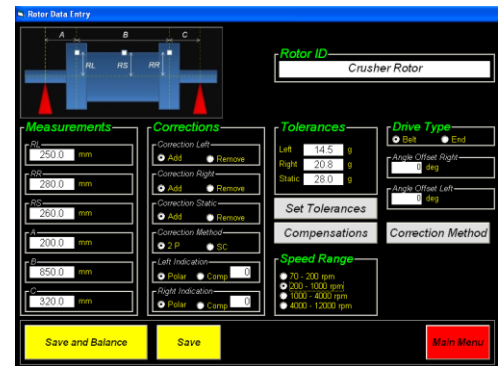
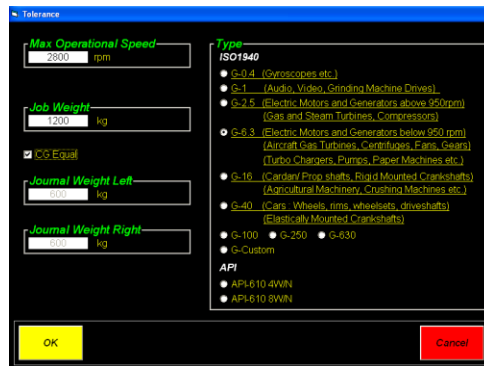
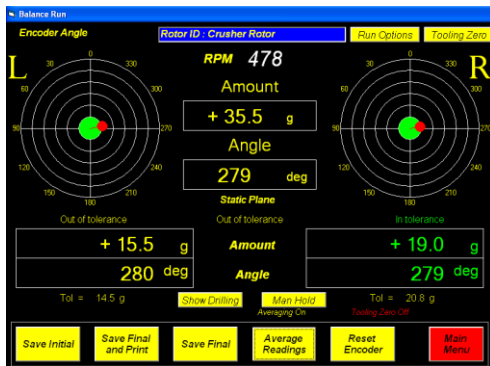
### Horizontal Hard Bearing Balancing



Specifications	
Max diameter over bed	2800 mm (110 in )
Max diameter over belt drive	2100 mm (83 in)
Bed Length	1500 / 3500 / 4500 mm (59 / 138 / 177 in )
Max Weight	6000 / 8000 kg (4400 / 6600 / 8800 lbs)
Motor Power Belt Drive	11 / 15 kW (15 / 20 Hp)
Motor Power End Drive	15 / 22 kW (20 / 30 Hp)



Accurate & High Quality Electronics



### Advantages of Hard Bearing Machines over Soft Bearing Machines:

- No trial runs required, Unbalance measured with first run
- Safer with Start-up and Large initial unbalances due to rigid construction and no shaking
- Safer and easier to balance overhung rotors

Sealed Pick-up Sensors

Laser Speed Sensor

Position Encoder



Detailed Print Reports

Peterson Balancing Supply 510-344-3454		
Dynamic Balancing Report		
Date: 22/10/2015	Time: 3:34 PM	
Job Data		
Job No: 1128534	Operation Speed: 3000 rpm	Customer: Johnson Traction
Description: Rotor X34TT	Mass: 6150 lbs	
Balancing Data		
a = 4.5 in	b = 18.0 in	c = 6.0 in
rL = 23.0 in	rR = 22.0 in	Balancing Speed = 475 rpm
Tolerance Data		
Type: API 610-8WN	Upper Left Plane: 0.3750 oz	Upper Right Plane: 0.3920 oz
Results		
Left Plane		Right Plane
Initial Amount: +3.3 oz	Angle: 283 deg	Initial Amount: +0.9065 oz
Final Amount: +0.9150 oz	Angle: 272 deg	Final Amount: 0.2469 oz
Result: In tolerance	Result: In tolerance	Result: In tolerance
Your job has been balanced on the most sophisticated COETZ Balancing Machine by our trained technicians.		
Technician	Supervisor	
Notes: Operator: James Anderson		